

REVISION RECORD				
REV	ECO	DESCRIPTION	DRFT	CHKD

NOTES:

ELECTRICAL:

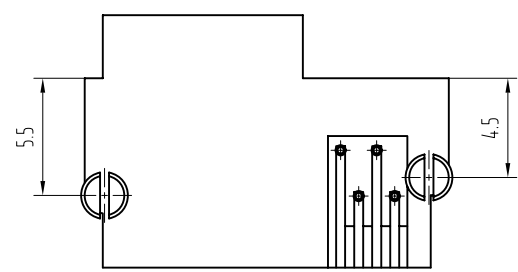
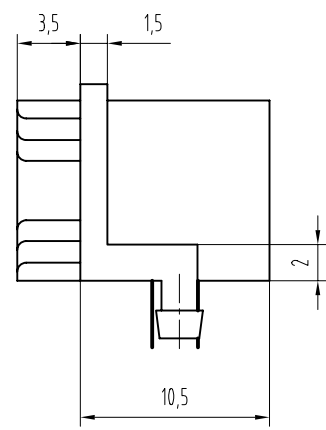
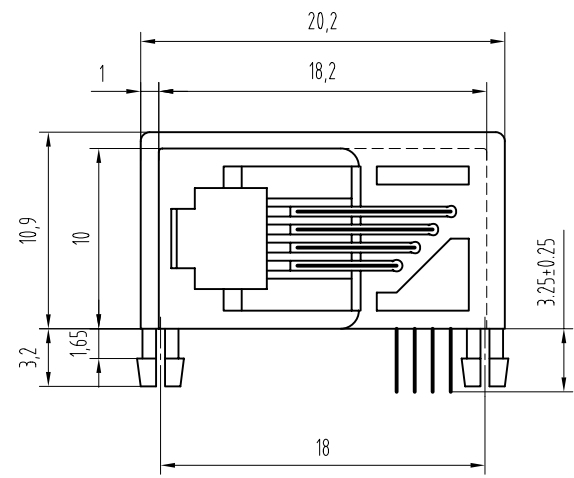
- 1.VOLTAGE RATING :125 VAC RMS.
- 2.CURRENT RATING :1.5 AMP.
- 3.CONTACT RESISTANCE :30 MILLIOHMS MAX.
- 4.INSULATION RESISTANCE :1000 MEGOHMS MIN @ 500V DC .
- 5.DIELECTRIC STRENGTH :1000V AC RMS 50Hz. 1MIN.

MECHANICAL:

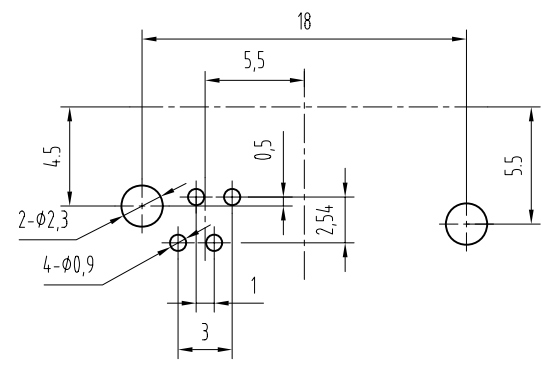
- 1.HOUSING MATERIAL :GLASS FILLED POLYESTER UL94V-0.
- 2.CONTACT MATERIAL :PHOSPHOR BRONZE  $\phi 0.46$ mm ROUND PIN.
- 3.PLATING :GOLD PLATING OVER NICKEL.
- 4.OPERATING :750 CYCLES MIN.
- 5.PCB RETENTION PRE-SOLDER :1 LB MIN.

ENVIRONMENTAL:

- 1.Temperature Range : -40 $^{\circ}$ C~+85 $^{\circ}$ C
- 2.Relative Humidity : 90~95% (40 $\pm$ 2 $^{\circ}$ C)



PCB LAYOUT



DETACHED LISTS	MM (INCH)	DFTO XNW	DATE 08.7.1	<b>Coorle Technology</b>		
	TOLERANCES EXCEPT AS NOTED	CHKD BETTY	DATE 08.7.1			
	MM	APPL PAUL	DATE 08.7.1	/PART NO. SIZE A4 REV A/0		
	.0 ± 0.20 .05 ± 0.15 .000 ± 0.075	ANGLES ±	QTY :			
THIRD ANGLE PROJECTION	FINISH :	SCALE : 1:1				